

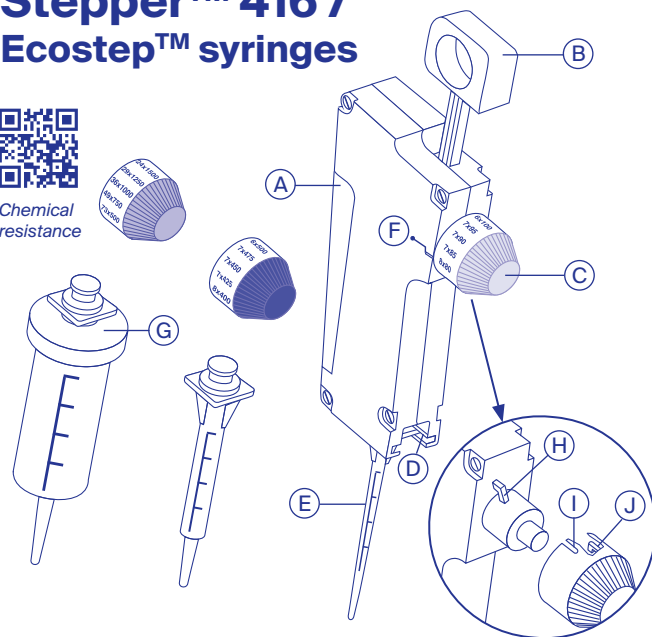
Quick Guide



Stepper™ 416 / Ecostep™ syringes



Chemical
resistance



- A** Trigger **B** Rod **C** Setting knob **D** Recess **E** Ecostep™ syringe
F Stetting mark **G** Adapter **H** Guide **I** Slot **J** Claw

	Related items	Capacity	Packaging	Cat. No.
Yellow	Ecostep™ 10 - 100 µL	0.75 mL	100 / pk	316.010
	Ecostep™ sterile** 10 - 100 µL	0.75 mL	50 / pk	316.010.9
Blue	Ecostep™ 50 - 500 µL	3.75 mL	100 / pk	316.050
	Ecostep™ sterile** 50 - 500 µL	3.75 mL	50 / pk	316.050.9
Red	Ecostep™ 500 - 5000 µL	37.5 mL	100 / pk*	316.500
	Ecostep™ sterile** 500 - 5000 µL	37.5 mL	50 / pk*	316.500.9
	Stand for Stepper™	-	1 / pk	320.411

* Includes 1 adapter for 37.5 mL red Ecostep™ syringe.

** Ecostep bioproof™ syringes are sterile, human DNA, DNase, RNase and pyrogen free.



**Package
contents**

Stepper™ 416, 3 color coded setting knobs,
adapter and Ecostep™ syringe samples,
Quick Guide.

⚠ Safety precautions

- Read carefully and observe manufacturer's instructions and guidelines.
- Refer to and follow regulations about handling of potentially hazardous reagents.
- Before use, check instrument for good working conditions.
- Use only original Ecostep™ syringes.
- Use water or alcohol to clean instrument (do not use solvents such as acetone).
- Mind possible hand fatigue and its medical consequences.
- This product should be used only for its intended purpose.

Volume range and Ecostep™ syringe selection

	Capacity	Volume range
Yellow	0.75 mL	10 - 100 µL
Blue	3.75 mL	50 - 500 µL
Red	37.5 mL	500 - 5000 µL

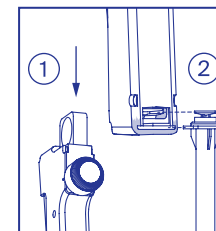
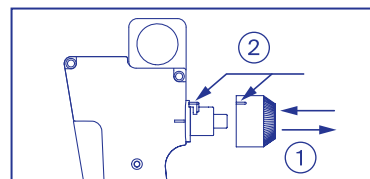
Volume and aliquot chart

Number of aliquots	73	49	36	29	24	20	18	15	14	12	11	10	9	8	8	7	7	7	6
Yellow	µL	10	15	20	25	30	35	40	45	50	55	60	65	70	75	80	85	90	100
Blue	µL	50	75	100	125	150	175	200	225	250	275	300	325	350	375	400	425	450	500
Red	µL	500	750	1000	1250	1500	1750	2000	2250	2500	2750	3000	3250	3500	3750	4000	4250	4500	5000

Step-by-step instructions

Inserting setting knob

- 1) Pull to remove. 2) Insert guide into slot, push until click.



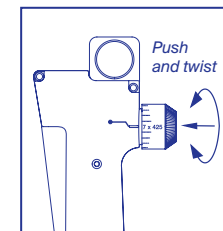
Inserting syringe

- 1) Slide rod down.
2) Insert syringe into recess.



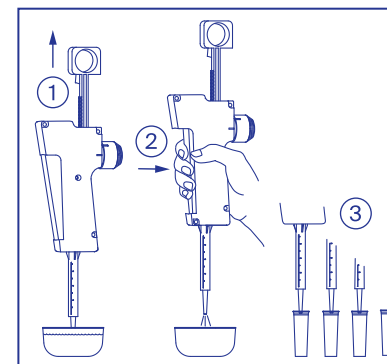
Fitting adapter for red syringe

- Screw adapter on top of syringe first.



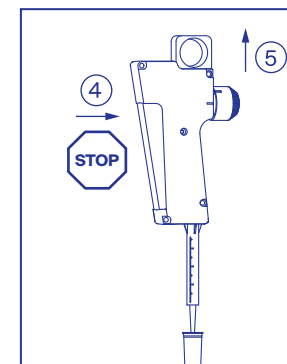
Volume setting

- Press knob and simultaneously rotate until volume scale and setting mark are even.



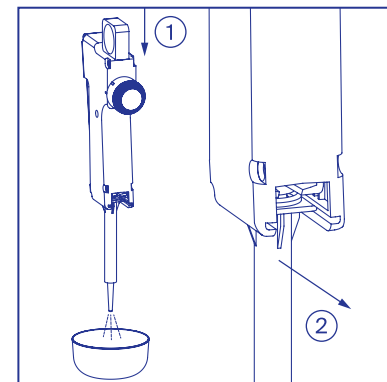
Filling and dispensing

- 1) Slowly pull rod upwards to aspirate liquid. Check absence of air bubble in liquid column. 2) Press trigger in full, discard first shot. 3) Depress trigger and release completely for each aliquot.



Automatic stop

- 4) Trigger auto-locks if remaining liquid is insufficient. 5) Pull rod upwards to re-aspirate liquid.



End of dosing

- 1) Push rod down to expel remaining liquid. 2) Slide syringe out of recess.

Scan to access operating instructions



EN / DE / FR

1.416.E-A0525